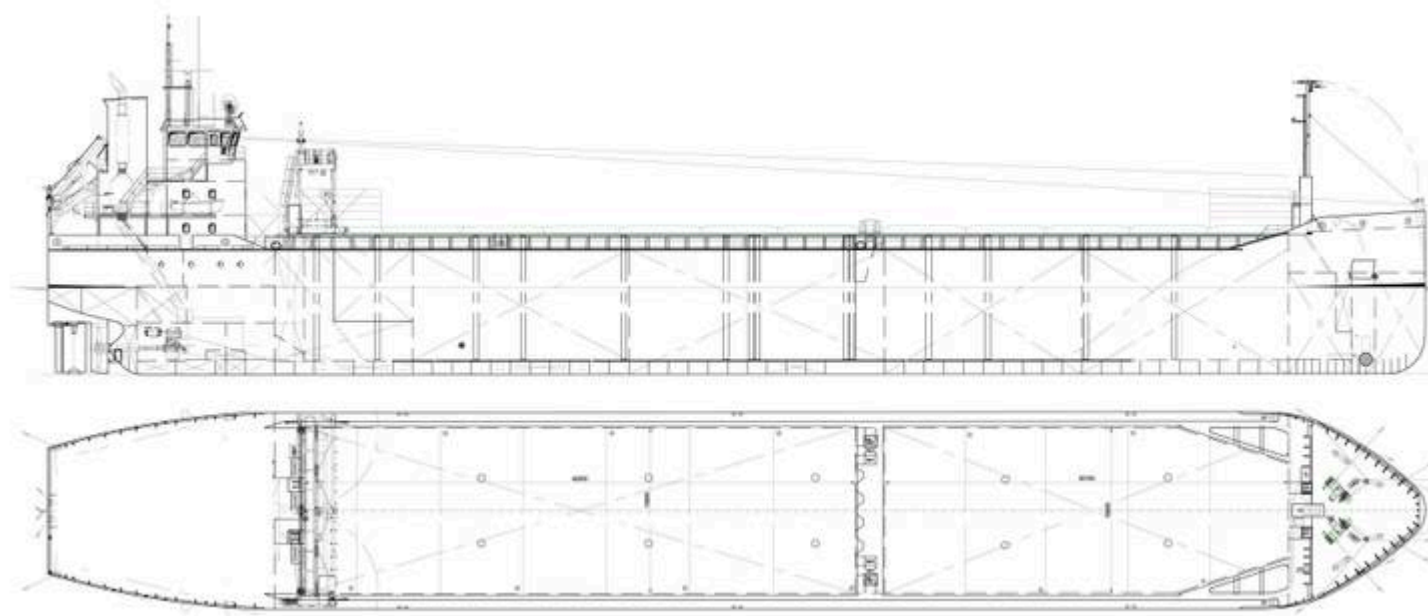


M/V SOFIA VG



General

Name: Sofia VG
Call sign: OJWA
IMO Nr: 1074034
Flag/Port: Finland / Turku
Built: 2026
Class: BV
Ice Class: 1A
P&I: Alandia

Measurements

GT: 4227
NT: 2109
DWT: 6735
DWCC: 6718

Main dimensions

LOA: 104,93 m
Breadth: 15,00 m
Mld Depth: 9,5 m
Draught: 6,6 m
Air draught: To be confirmed (ballast)
Waterline to hatch: 6,8 m (ballast)

Cargo hold

Dimensions: Hold 1, 30.75 x 12,6m x 9.616m.
Hold 2, 44.25 x 12.6 x 9.616m.
Grain: 310 000 cbft, 8800 m³
Tank top: 15 t/m²
Hatch: 1,765 t/m²
Bulkheads: 2

Propulsion

Main Engine: Wärtsilä 9L20, 1800 kW
Bowthruster: 300 kW
Speed: 11,5 kn

Owner

Meriaura Ltd.
Contacts
Operations
Chartering
Eerikinkatu 26 , FIN-20100 TURKU
<https://meriaura.fi/en/contacts/operations@meriaura.fi>
chartering@meriaura.fi

Sofia VG sofiavg.bridge@meriaura.fi