



NMF CYLINDER LUFFING CRANE PKL 20012 / 1018 AHC



Active Heave Compensation

| | |
|-------------------------|----------------------|
| SWL 20t, Outreach: | 3,0 – 12,0m |
| SWL 1,0t, Outreach | 4,6 – 18m |
| Hook above water level: | 28m |
| Slewing range: | 360 degree unlimited |
| Heel / Trim: | 5dgr / 2dgr |
| Dead weight: | approx. 34ton |

MRU-unit to give the AHC system a signal to keep load at a constant elevation

| | |
|-------------------|---|
| Key facts of MRU: | Roll / Pitch 0.03° |
| | Heave 5cm or 5% |
| | Accelerations / Velocities |
| | Velocity input formats, RMC, RMA, VTG, VBW, VHW |
| | Heading input formats, NMEA 0183, HDT, HDG |
| | Solid state gyros and accelerometers |

Mast for jib resting

Bureau Veritas certification

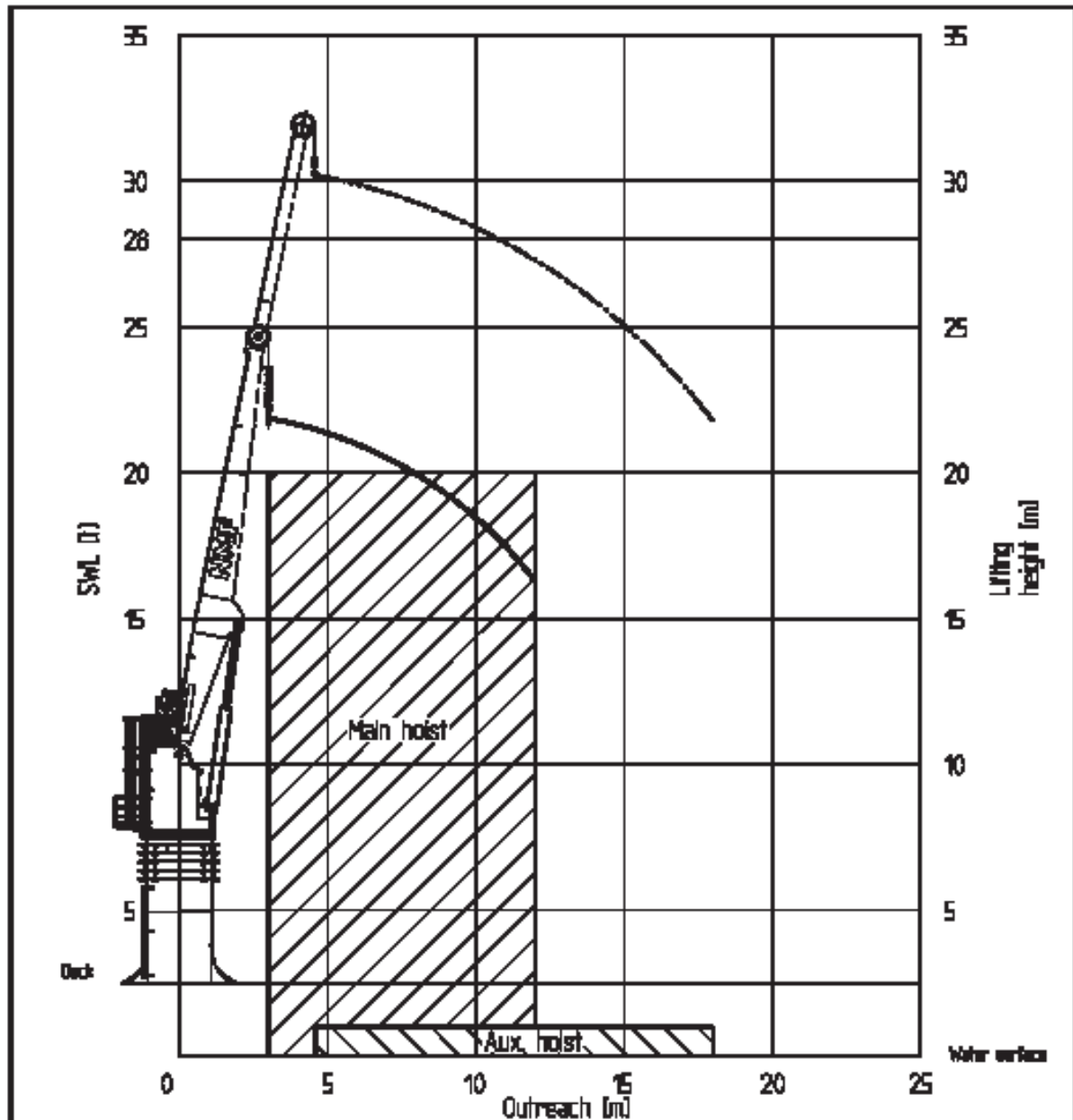
Lots of spare parts, see attached list for details

Above mentioned features can be reached when the crane is assembled on a 5m high pedestal.

Including man basket.



SWL 20t 3,0 - 12,0m
1t 4,6 - 18,0m AHC



Heel/Trim: 5/2°
 Wind speed crane operation: 20m/s
 Main hoist: Internal lifts / harbour lifts
 Auxiliary hoist: Internal lifts / harbour lifts / Ship to platform (Halm-2,5m, T-9sec)

| | | | | |
|-------|----------------------|------------|------|----------------------------|
| Index | Zeichnung/Abweichung | Datum/Date | Name | Projeckt durch/approved by |
| | | | | |
| | | | | |

| | | | |
|--|---|---|---|
| Maße ohne Toleranzen nach DIN 7168 mittel Measures without tolerances according DIN 7168 middle | Gewicht/Weight | | NMF Neuenfelder Maschinenfabrik Hamburg |
| | Form Nr./Model No. | | |
| | Material/Material | | Bezeichnung Designation Cargo turning crane PKL 20012/1018 AHC |
| Maßstab Scale 1:200 | Bear./Drawn 28.06.2012 Gepr./Check 28.06.2012 Name Malchenrek DR/TB | Name Malchenrek | Zeichn. Nr. Drawing No. 835-0600-04(4) BL4 |
| Europäische Projektion European Projection | Name DR/TB | Ersatz für Substitute for PKL 20012/1018 AHC | Datum Date 28.06.2012 |